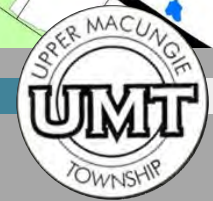
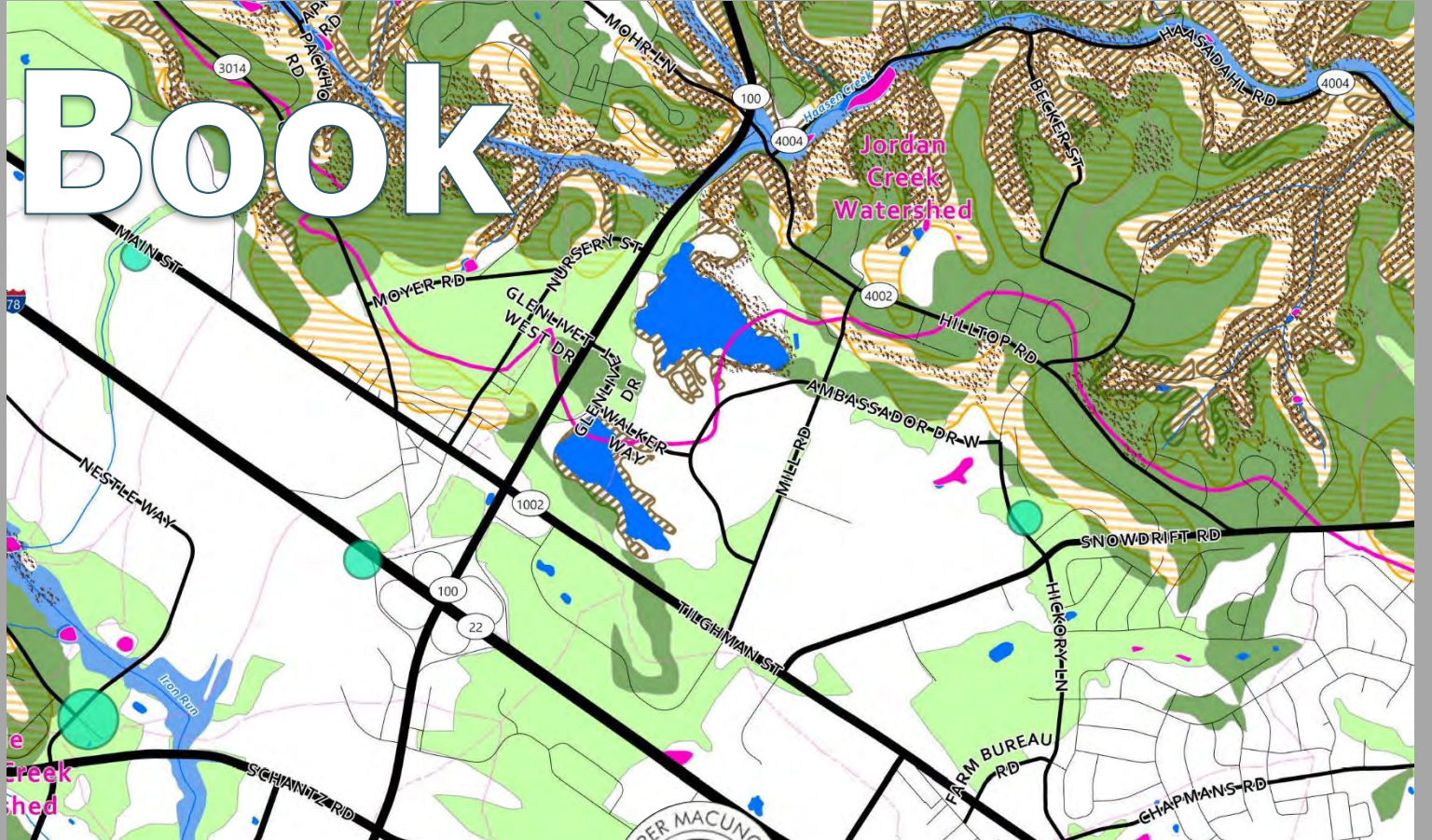




Map



Upper Macungie Township
2019 Comprehensive Plan
Lehigh County, Pennsylvania



A Plan for Growth Management and Preservation

Acknowledgements

Township Planning Commission

Charles Deprill, Chairman
 Paul McNemar, Vice-Chairman
 Makala A. Ashmar, Secretary
 Kim Snelling
 Tim Helmer
 Chris Walls
 Mike Werst
 Sunny Ghai, Former Planning Commissioner

Comprehensive Plan Steering Committee

David Carr
 William Engelbrecht
 Lauren Golden
 Toney Horst
 John Landis
 Kevin Murphy
 David Wolfson

Lehigh Valley Planning Commission Liaison

Amanda L. Raudenbush, AICP, Former Director of Community Planning

Township Solicitor

Andrew Schantz

Township Board of Supervisors

James Brunell, Chairman
 Sean Gill, Vice Chairman
 Kathy Rader, Supervisor

Township Staff

Robert Ibach, Jr., Township Manager
 Daren J. Martocci, Director of Community Development
 Bruce Koller, Finance Director
 Scott Faust, Director of Public Works
 Edgardo Colon, Chief of Police
 Lynn Pigliacampi, Recreations & Events Coordinator
 Grant Grim, Director, Bureau of Fire

Keystone Consulting Engineers, Inc.

J. Scott Senroos, PE
 Dave Alban, PE
 Heather Willever, GIS Tech.

The development of the Upper Macungie Township 2019 Comprehensive Plan was a collaboration between the Planning Consultant Team, Township Staff, Planning Commission/Steering Committee, and Keystone Consulting Engineering (Township's Representing Engineer).

Plan Prepared by Planning Consultant Team led by Johnson, Mirmiran & Thompson, Inc.



Johnson, Mirmiran & Thompson Inc.

April A. Showers, AICP, Vice President/Principal Planner
 Joy M. Ruff, AICP, Senior Associate
 Angie Hernandez, AICP, Associate
 Sean Lain, Technology Analyst
 Aimee K. DiStefano, Graphics
 Brad T. Heilman, Associate, Graphics



Real Estate Strategies, Inc./ RES Advisors

Elizabeth M. Beckett, CRE®
 Senior Vice President
 James Hamilton



KSK Architects Planners Historians Inc.

Paul A. Vernon, Managing Principal
 Laura Ahramjian, AICP, Urban Planner

Introduction

This Map Book is a part of the 2019 Upper Macungie Township Comprehensive Plan. This document includes a series of maps to depict past and current land use patterns, zoning, community facilities, environmentally sensitive areas, recreation, conservation and preservation, agricultural land, and a multimodal transportation network. The maps represent various features, elements, and conditions associated with comprehensive planning that tell a story over time about growth management and preservation.

Land use maps are used to depict changes in patterns from 2004 to 2007 to the present (2018). These changes over time along with other features and conditions depicted on other maps impact the **sustainability of Upper Macungie Township's social, environmental, and economic aspects of the community affecting the Quality of Life (QOL) of today and tomorrow's residents, businesses, and visitors.**

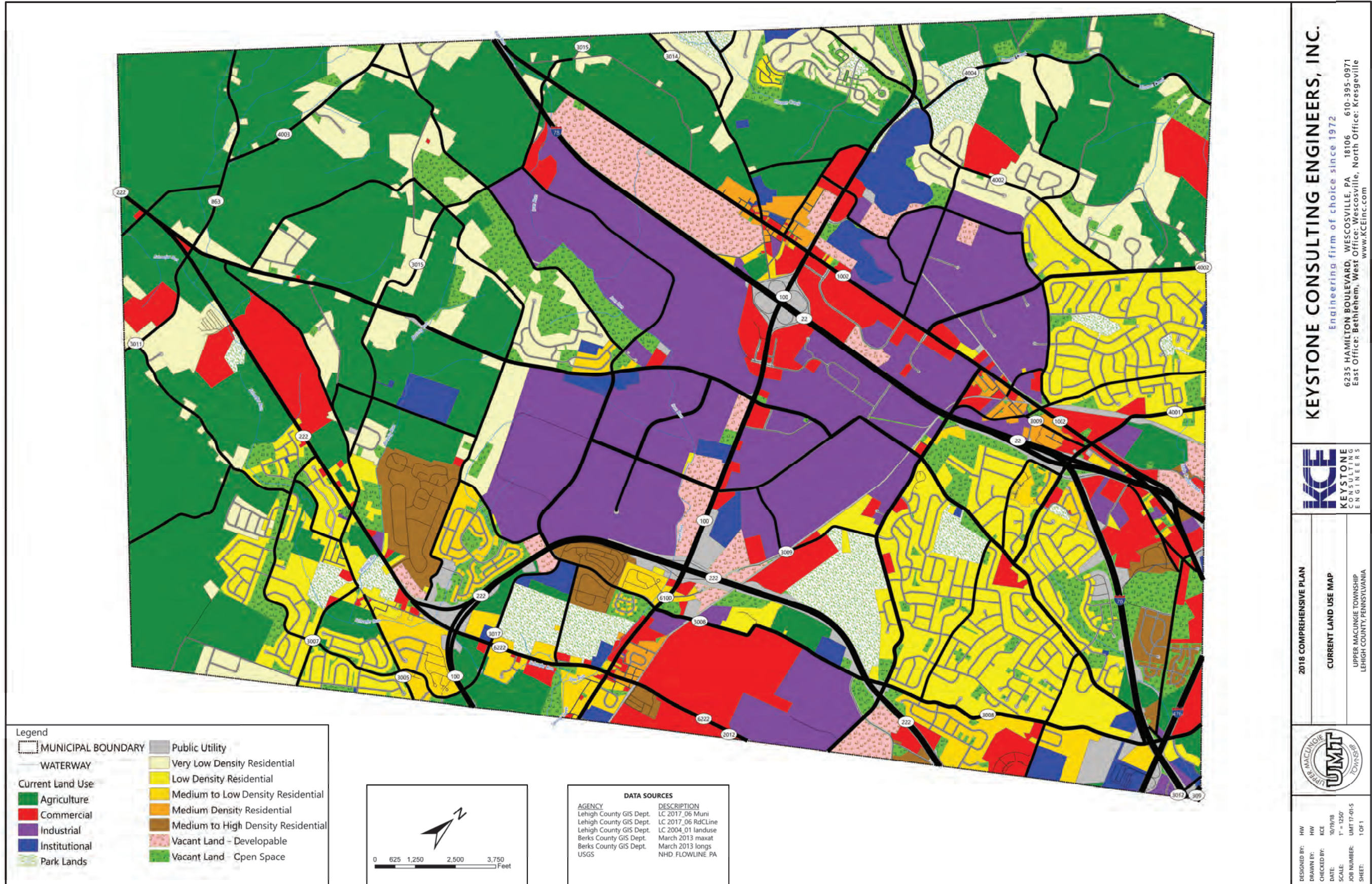
The Future Land Use Map is **Upper Macungie Township's visual guide to future planning. This map** considers the various features, themes, and topics identified on the various maps in this document and the goals, objectives, public input, analysis, policies, strategies, and action items outlined in the 2019 Comprehensive Plan and relevant information and planning implications outlined in the technical reports contained in the Appendices.

Contents

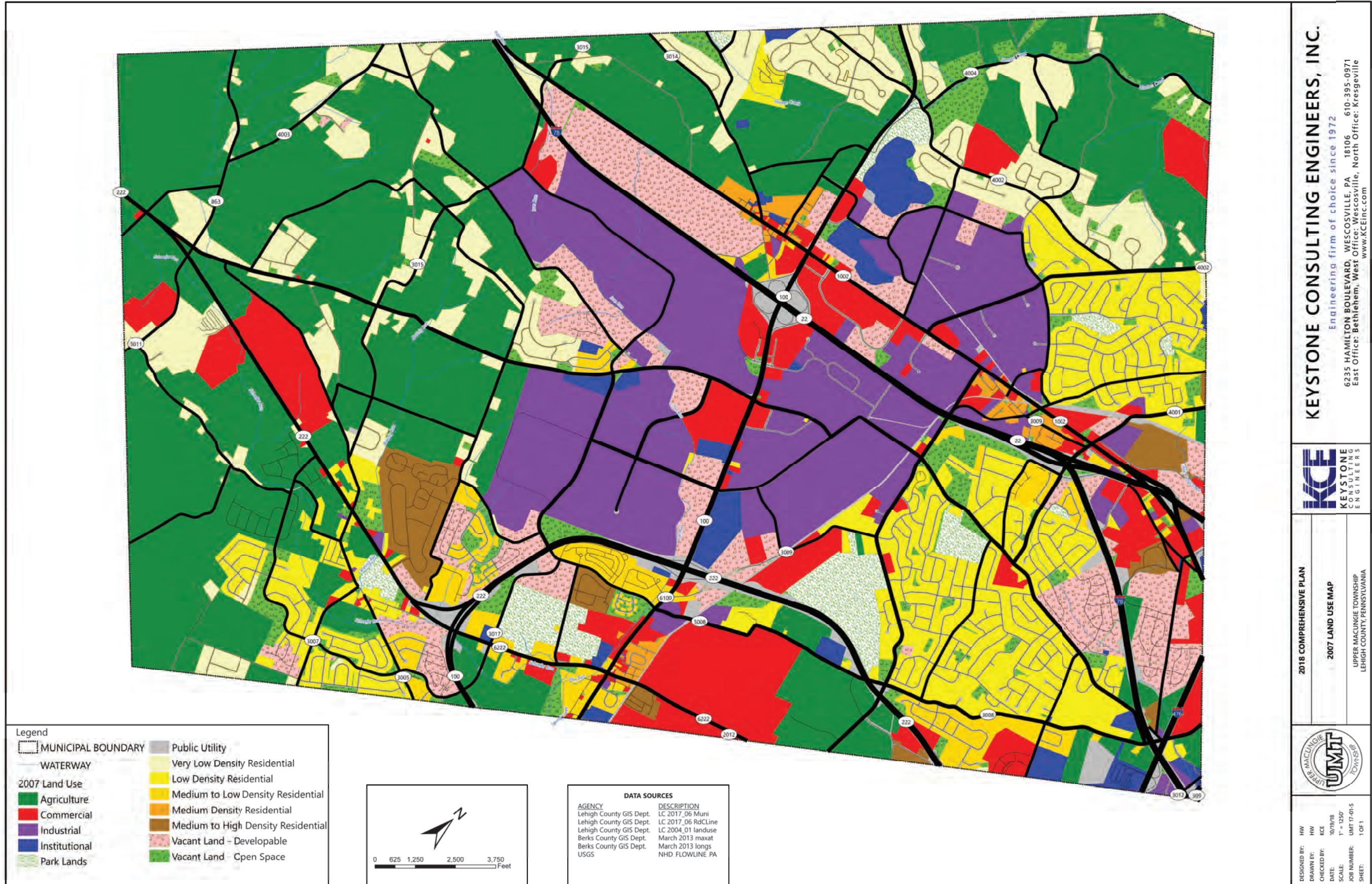
Map 1: Existing Land Use	1
Map 1A: 2007 Land Use	2
Map 1B: 2004 Land Use	3
Map 2: Zoning.....	4
Map 3: Future Land Use	5
Map 4: Community Facilities	6
Map 5: Recreation and Conservation	7
Map 6: Environmentally Sensitive Areas.....	8
Map 7: Wellhead Protection Areas and Carbonate Bedrock Areas	9
Map 8: Agricultural Lands and Preservation.....	10
Map 9: Street Classification	11
Map 10: Truck Routes & Restrictions.....	12
Map 11: Traffic Improvements and Congestion	13
Map 12: Connections	14

Keystone Engineering and JMT prepared maps contained in this document as part of the 2019 Comprehensive Plan.

Map 1: Existing Land Use



Map 1A: 2007 Land Use



KEYSTONE CONSULTING ENGINEERS, INC.
 Engineering firm of choice since 1972
 6235 HAMILTON BOULEVARD, WESCOVILLE, PA 18106 610-395-0571
 East Office: Bethlehem, West Office: Wescosville, North Office: Kresgeville
 www.KCEinc.com



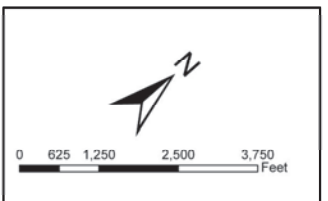
2018 COMPREHENSIVE PLAN
 2007 LAND USE MAP
 UPPER MACUNGIE TOWNSHIP
 LEHIGH COUNTY, PENNSYLVANIA



DESIGNED BY: HW
 DRAWN BY: HW
 CHECKED BY: KCE
 DATE: 10/19/18
 SCALE: 1" = 1250'
 JOB NUMBER: UMT 17-01-S
 SHEET: 1 OF 1

Legend

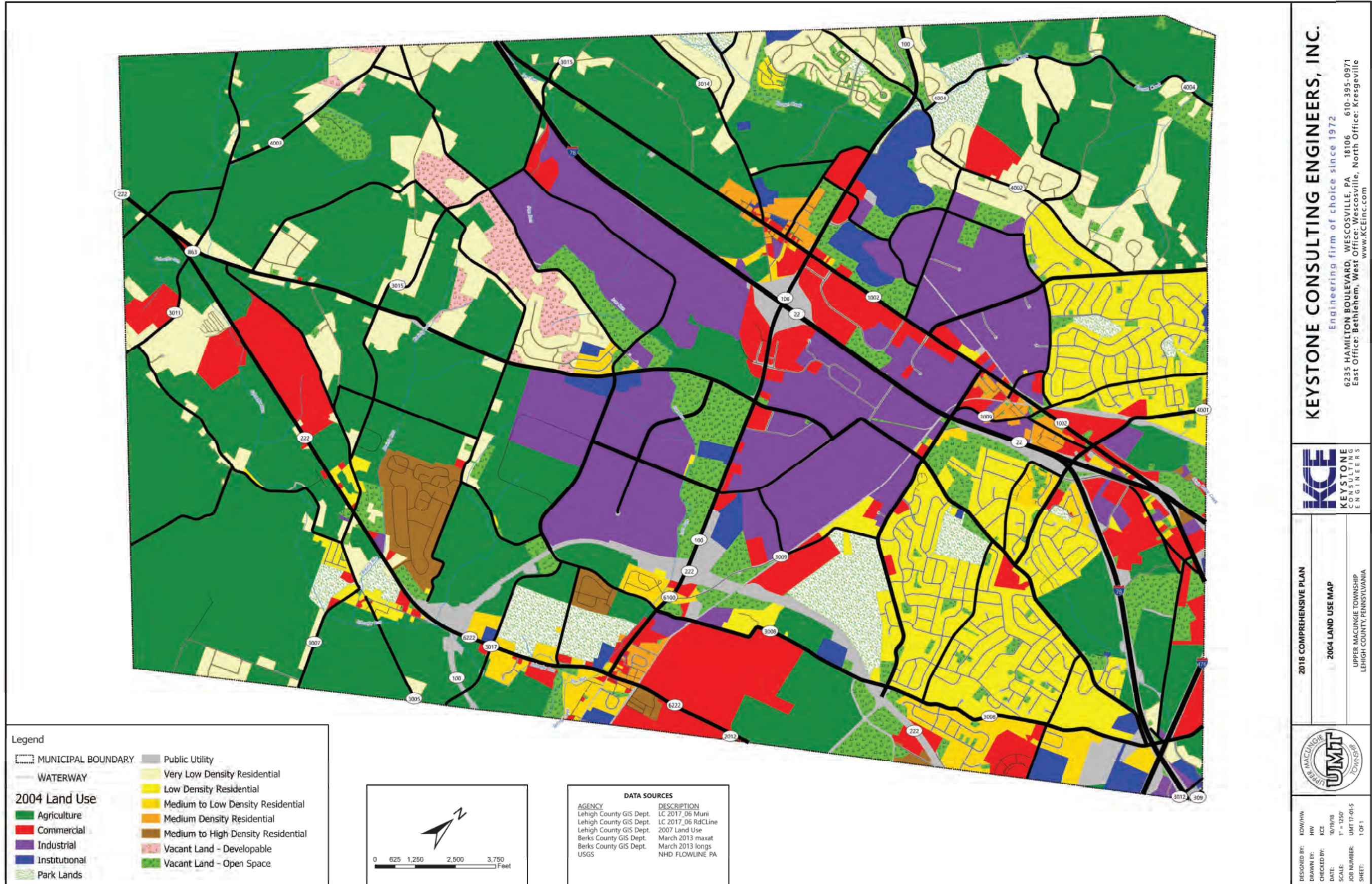
MUNICIPAL BOUNDARY	Public Utility
WATERWAY	Very Low Density Residential
2007 Land Use Agriculture	Low Density Residential
Commercial	Medium to Low Density Residential
Industrial	Medium Density Residential
Institutional	Medium to High Density Residential
Park Lands	Vacant Land - Developable
	Vacant Land - Open Space



DATA SOURCES

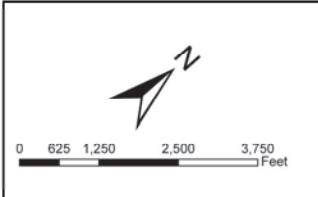
AGENCY	DESCRIPTION
Lehigh County GIS Dept.	LC 2017_06 Muni
Lehigh County GIS Dept.	LC 2017_06 RdCLine
Lehigh County GIS Dept.	LC 2004_01 landuse
Berks County GIS Dept.	March 2013 maxat
Berks County GIS Dept.	March 2013 longs
USGS	NHD FLOWLINE PA

Map 1B: 2004 Land Use



Legend

MUNICIPAL BOUNDARY	Public Utility
WATERWAY	Very Low Density Residential
2004 Land Use	Low Density Residential
Agriculture	Medium to Low Density Residential
Commercial	Medium Density Residential
Industrial	Medium to High Density Residential
Institutional	Vacant Land - Developable
Park Lands	Vacant Land - Open Space



DATA SOURCES

AGENCY	DESCRIPTION
Lehigh County GIS Dept.	LC 2017_06 Muni
Lehigh County GIS Dept.	LC 2017_06 RdCLine
Lehigh County GIS Dept.	2007 Land Use
Berks County GIS Dept.	March 2013 maxat
Berks County GIS Dept.	March 2013 longs
USGS	NHD FLOWLINE PA

KEYSTONE CONSULTING ENGINEERS, INC.
 Engineering firm of choice since 1972
 6235 HAMILTON BOULEVARD, WESCOVILLE, PA 18106 610-395-0571
 East Office: Bethlehem, West Office: Wescosville, North Office: Kresgeville
 www.KCEinc.com

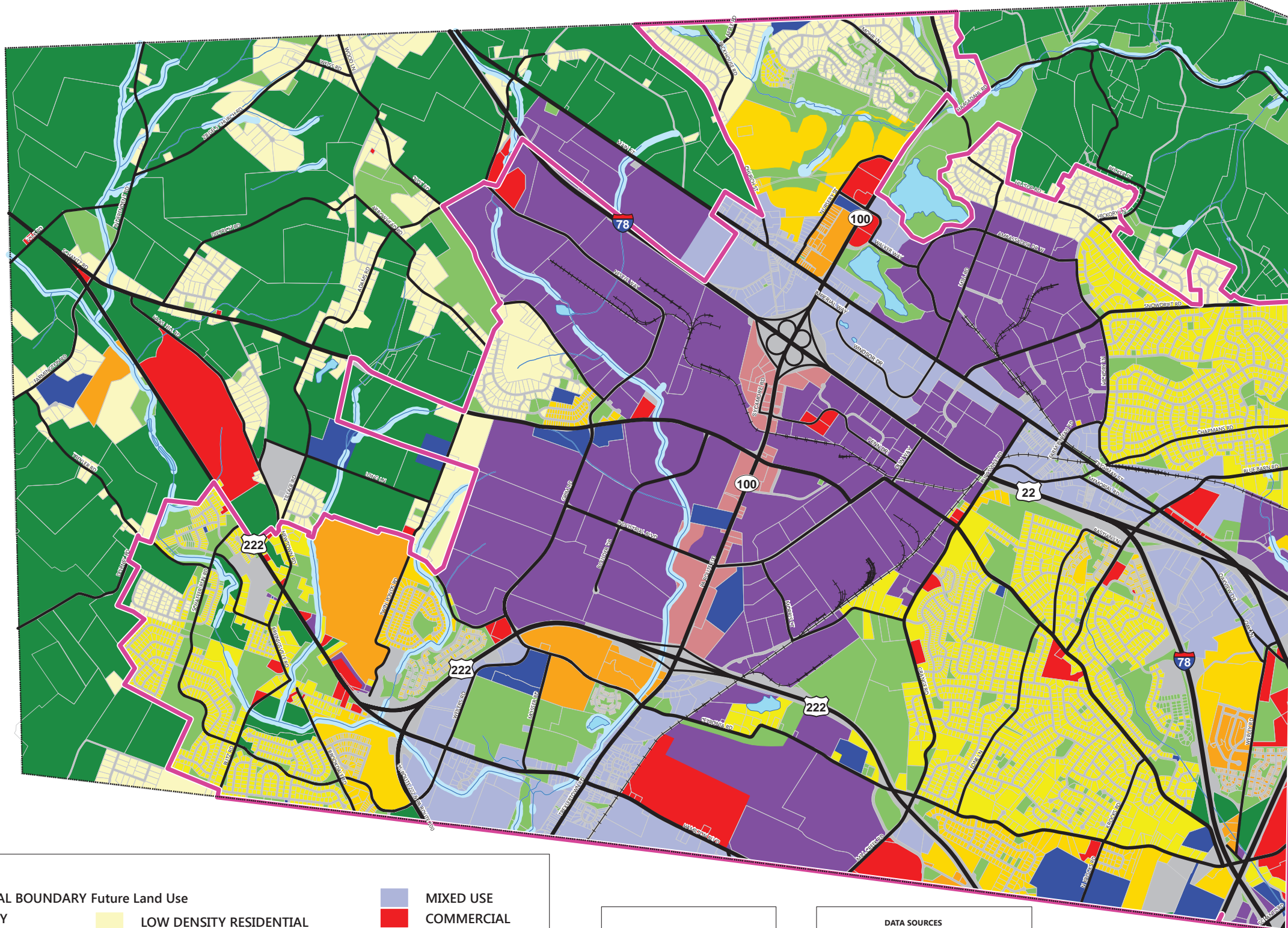


2018 COMPREHENSIVE PLAN
 2004 LAND USE MAP
 UPPER MACUNGIE TOWNSHIP
 LEHIGH COUNTY, PENNSYLVANIA



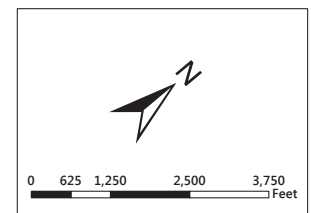
DESIGNED BY: KOW/HW
 DRAWN BY: HW
 CHECKED BY: KCE
 DATE: 10/19/18
 SCALE: 1" = 1250'
 JOB NUMBER: UMT 17-01-S
 SHEET: 1 OF 1

Map 3: Future Land Use



Legend

MUNICIPAL BOUNDARY Future Land Use	LOW DENSITY RESIDENTIAL	COMMERCIAL
ROADWAY	LOW-MEDIUM DENSITY RESIDENTIAL	INDUSTRIAL
ACTIVE RAILROAD	MEDIUM DENSITY RESIDENTIAL	INSTITUTIONAL
WATERWAY	MEDIUM-HIGH DENSITY RESIDENTIAL	PUBLIC UTILITY
RIPARIAN BUFFER	TOWN CENTER	AGRICULTURE
WATERBODY	PARK / OPEN SPACE	
MUNICIPAL URBAN GROWTH BOUNDARY		



DATA SOURCES

AGENCY	DESCRIPTION
Lehigh County GIS Dept.	LC 2017_06 Muni
Lehigh County GIS Dept.	LC 2017_06 RdCLine
Keystone Engineering	RRActive
Keystone Engineering	ProposedSewerServiceAreaAct
Keystone Engineering	RiparianBuffer
Johnson, Mirmiran & Thompson	FutureLandUse
USGS	NHD_FLOWLINE_PA
USGS	NHDWaterBodyRev

Johnson, Mirmiran & Thompson (JMT)
 Corporate Headquarters: 40 Wight Avenue, Hunt Valley, MD 21030, USA
 (410) 329-3100
 www.jmt.com

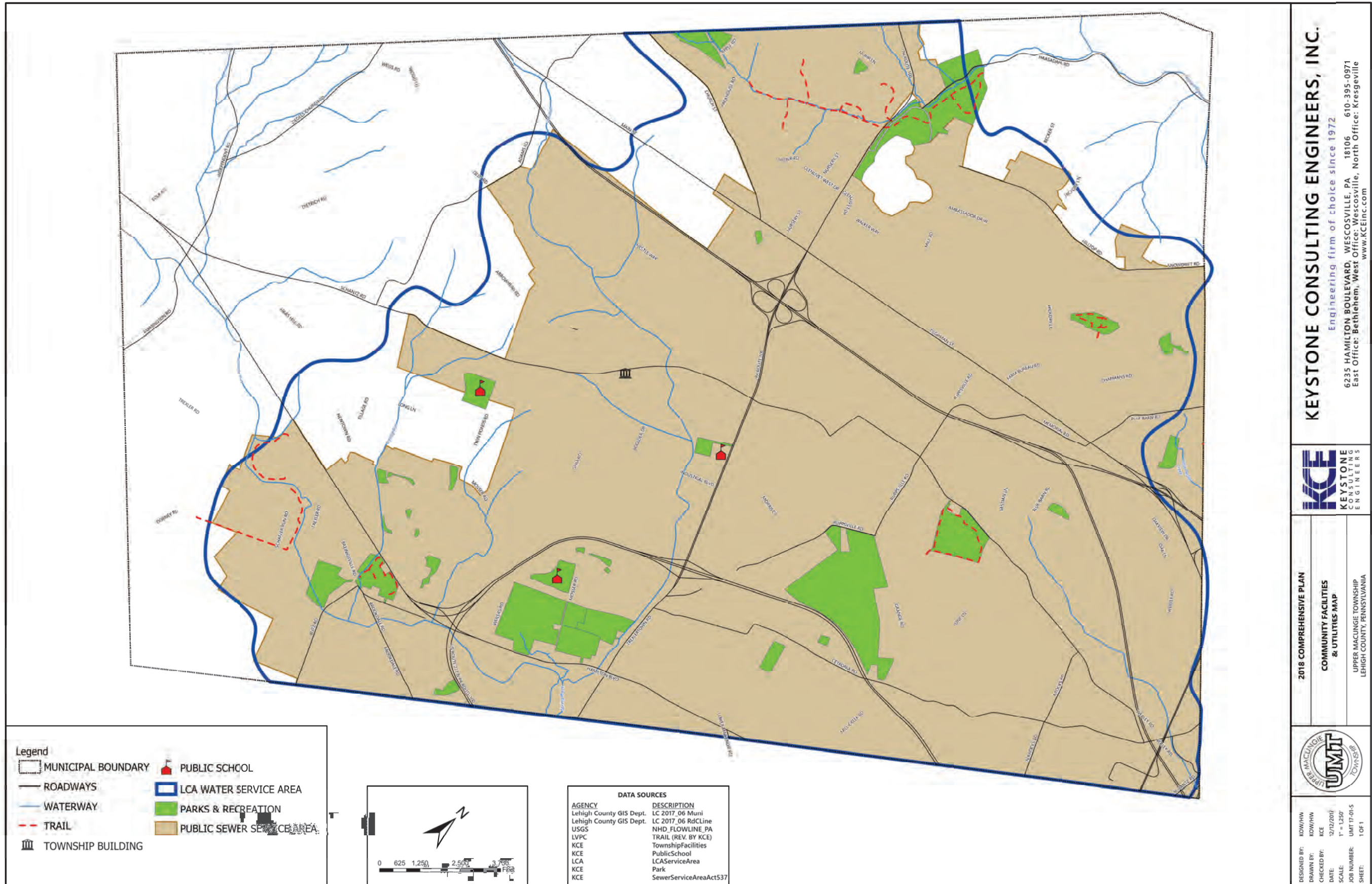


DRAFT 2018 COMPREHENSIVE PLAN
 FUTURE LAND USE MAP
 UPPER MACUNGIE TOWNSHIP
 LEHIGH COUNTY, PENNSYLVANIA



DESIGNED BY: JMT
 DRAWN BY: JMT
 CHECKED BY: JMT
 DATE: 11/15/2019
 SCALE: 1" = 1,250'
 JOB NUMBER: UMT 17-01-5
 SHEET: 1 OF 1

Map 4: Community Facilities



KEYSTONE CONSULTING ENGINEERS, INC.
 Engineering firm of choice since 1972
 6235 HAMILTON BOULEVARD, WESCOVILLE, PA 18106 610-395-0571
 East Office: Bethlehem, West Office: Wescosville, North Office: Kresgeville
 www.KCEinc.com

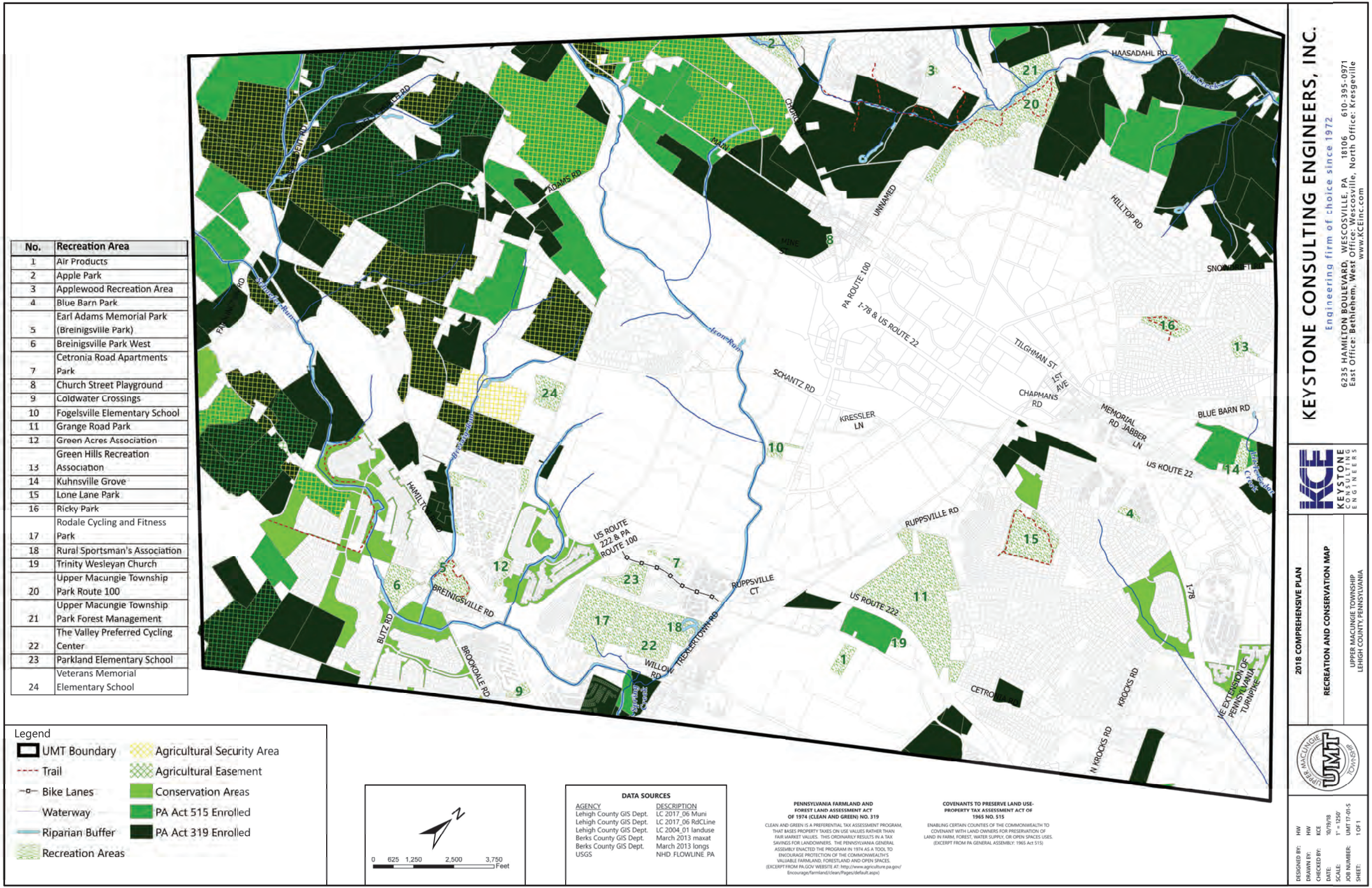


2018 COMPREHENSIVE PLAN
 COMMUNITY FACILITIES
 & UTILITIES MAP
 UPPER MACUNGIE TOWNSHIP
 LEHIGH COUNTY, PENNSYLVANIA



DESIGNED BY: KOW/WH
 DRAWN BY: KOW/WH
 CHECKED BY: KCE
 DATE: 12/12/2017
 SCALE: 1" = 1,250'
 JOB NUMBER: UMT 17-01-S
 SHEET: 1 OF 1

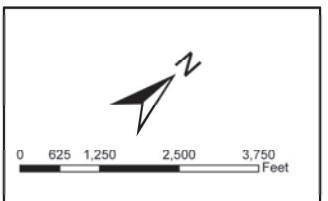
Map 5: Recreation and Conservation



No.	Recreation Area
1	Air Products
2	Apple Park
3	Applewood Recreation Area
4	Blue Barn Park
5	Earl Adams Memorial Park (Breinigsville Park)
6	Breinigsville Park West
7	Cetronia Road Apartments Park
8	Church Street Playground
9	Coldwater Crossings
10	Fogelsville Elementary School
11	Grange Road Park
12	Green Acres Association
13	Green Hills Recreation Association
14	Kuhnsville Grove
15	Lone Lane Park
16	Ricky Park
17	Rodale Cycling and Fitness Park
18	Rural Sportsman's Association
19	Trinity Wesleyan Church
20	Upper Macungie Township Park Route 100
21	Upper Macungie Township Park Forest Management
22	The Valley Preferred Cycling Center
23	Parkland Elementary School
24	Veterans Memorial Elementary School

Legend

- UMT Boundary
- Trail
- Bike Lanes
- Waterway
- Riparian Buffer
- Agricultural Security Area
- Agricultural Easement
- Conservation Areas
- PA Act 515 Enrolled
- PA Act 319 Enrolled
- Recreation Areas



DATA SOURCES

AGENCY	DESCRIPTION
Lehigh County GIS Dept.	LC 2017_06 Muni
Lehigh County GIS Dept.	LC 2017_06 RdLine
Lehigh County GIS Dept.	LC 2004_01 landuse
Berks County GIS Dept.	March 2013 maxat
Berks County GIS Dept.	March 2013 longs
USGS	NHD FLOWLINE PA

PENNSYLVANIA FARMLAND AND FOREST LAND ASSESSMENT ACT OF 1974 (CLEAN AND GREEN) NO. 319

CLEAN AND GREEN IS A PREFERENTIAL TAX ASSESSMENT PROGRAM, THAT BASES PROPERTY TAXES ON USE VALUES RATHER THAN FAIR MARKET VALUES. THIS ORDINARILY RESULTS IN A TAX SAVING FOR LANDOWNERS. THE PENNSYLVANIA GENERAL ASSEMBLY ENACTED THE PROGRAM IN 1974 AS A TOOL TO ENCOURAGE PROTECTION OF THE COMMONWEALTH'S VALUABLE FARMLAND, FORESTLAND AND OPEN SPACES. (EXCERPT FROM PA.GOV WEBSITE AT: <http://www.agriculture.pa.gov/Encourage/farmland/clean/green/default.aspx>)

COVENANTS TO PRESERVE LAND USE - PROPERTY TAX ASSESSMENT ACT OF 1965 NO. 515

ENABLING CERTAIN COUNTIES OF THE COMMONWEALTH TO COVENANT WITH LAND OWNERS FOR PRESERVATION OF LAND IN FARM, FOREST, WATER SUPPLY, OR OPEN SPACES USES. (EXCERPT FROM PA GENERAL ASSEMBLY: 1965 Act 515)

KEYSTONE CONSULTING ENGINEERS, INC.
 Engineering firm of choice since 1972
 6235 HAMILTON BOULEVARD, WESCOVILLE, PA 18106 610-395-0871
 East Office: Bethlehem, West Office: Wescosville, North Office: Kresgeville
www.KCEinc.com

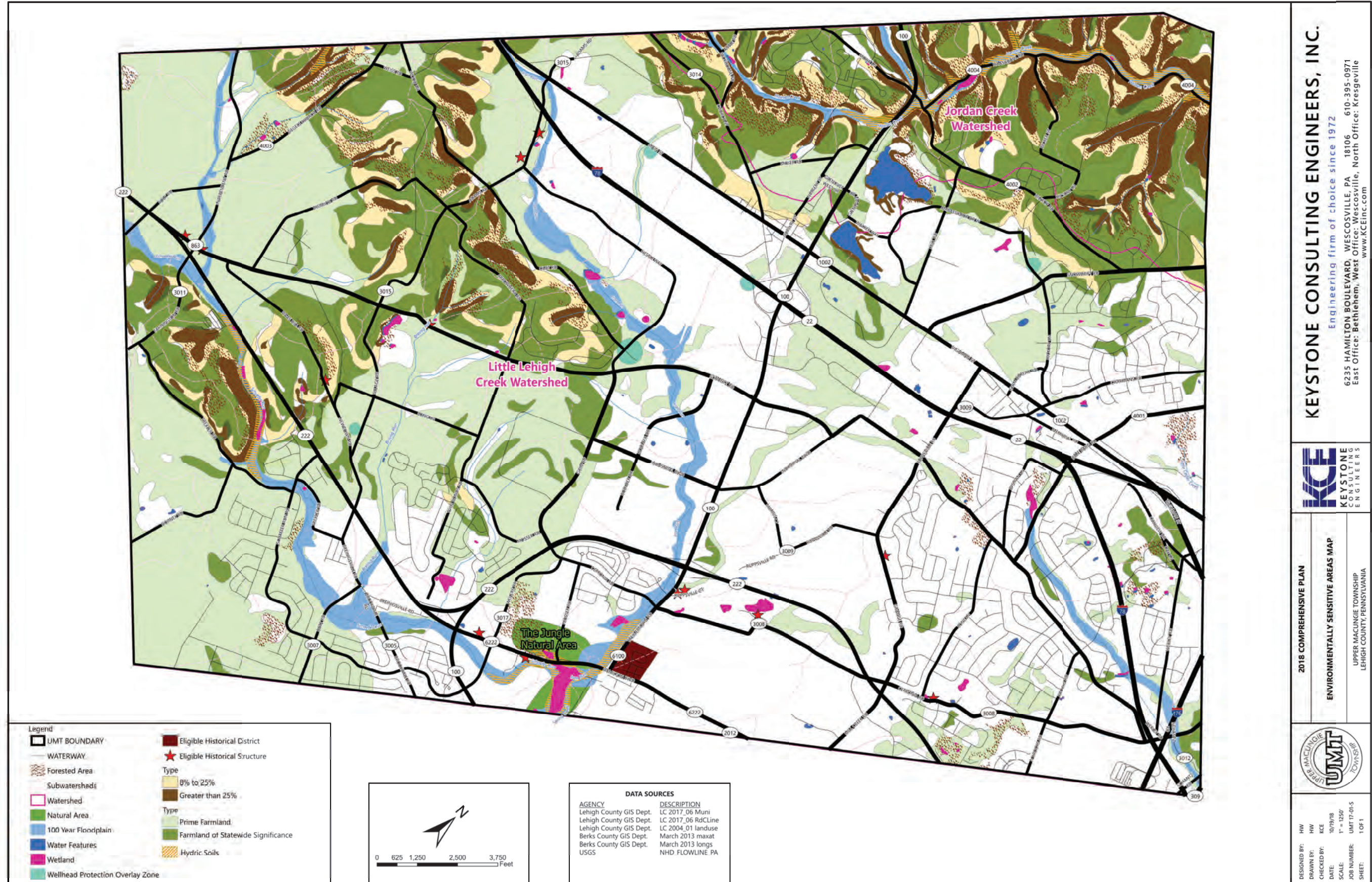


2018 COMPREHENSIVE PLAN
 RECREATION AND CONSERVATION MAP
 UPPER MACUNGIE TOWNSHIP
 LEHIGH COUNTY, PENNSYLVANIA



DESIGNED BY: HW
 DRAWN BY: HW
 CHECKED BY: KCE
 DATE: 10/19/18
 SCALE: 1" = 1250'
 JOB NUMBER: UMT 17-01-S
 SHEET: 1 OF 1

Map 6: Environmentally Sensitive Areas



KEYSTONE CONSULTING ENGINEERS, INC.
 Engineering firm of choice since 1972
 6235 HAMILTON BOULEVARD, WESCOVILLE, PA 18106 610-395-0871
 East Office: Bethlehem, West Office: Wescosville, North Office: Kresgeville
 www.KCEinc.com

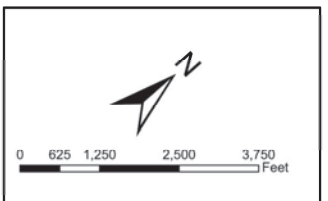


2018 COMPREHENSIVE PLAN
 ENVIRONMENTALLY SENSITIVE AREAS MAP
 UPPER MACUNGIE TOWNSHIP
 LEHIGH COUNTY, PENNSYLVANIA



DESIGNED BY: HW
 DRAWN BY: HW
 CHECKED BY: KCE
 DATE: 10/19/18
 SCALE: 1" = 1250'
 JOB NUMBER: UMT 17-01-S
 SHEET: 1 OF 1

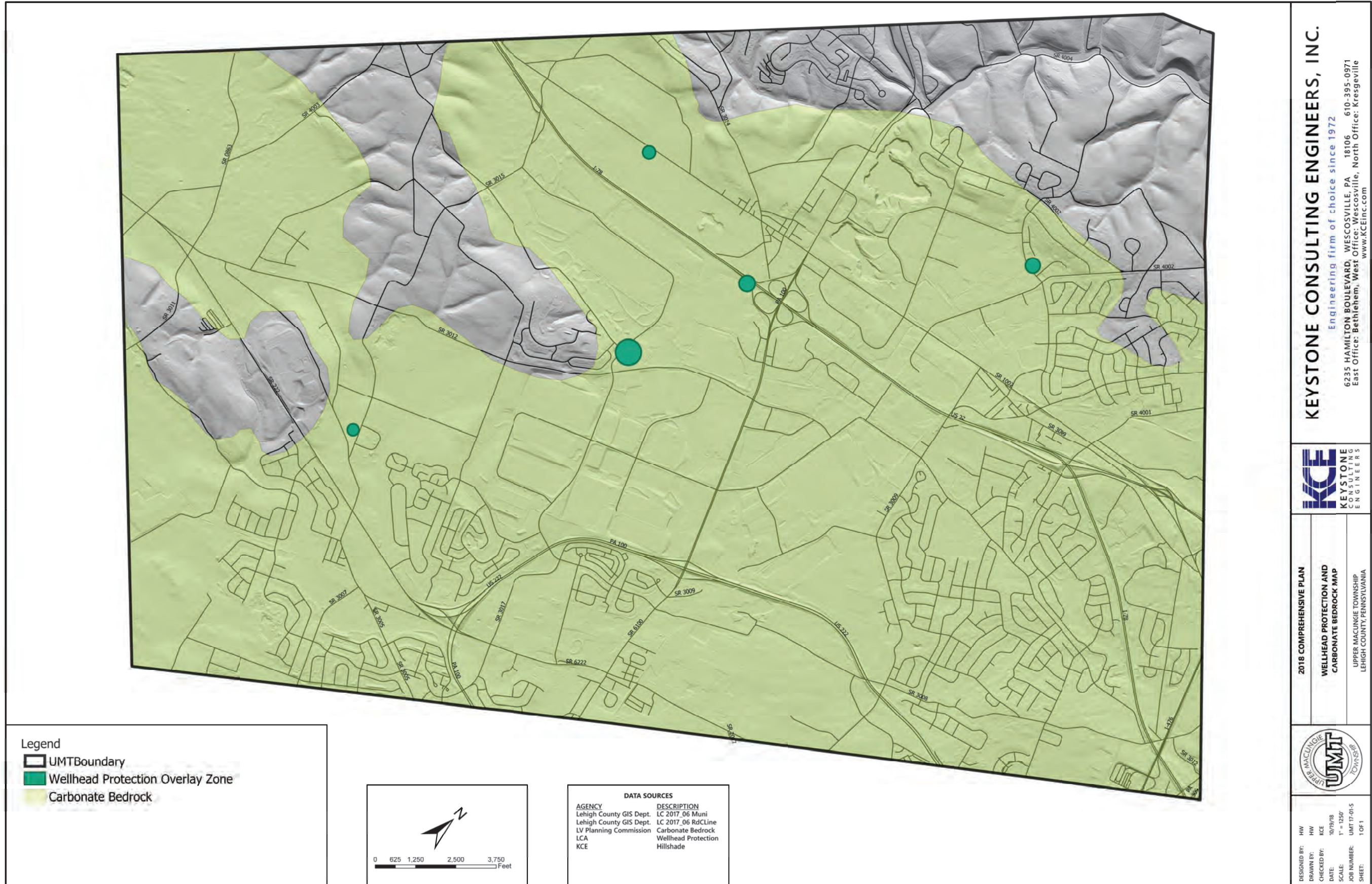
- Legend**
- UMT BOUNDARY
 - WATERWAY
 - Forested Area
 - Subwatersheds
 - Watershed
 - Natural Area
 - 100 Year Floodplain
 - Water Features
 - Wetland
 - Wellhead Protection Overlay Zone
 - Eligible Historical District
 - Eligible Historical Structure
 - Type
 - 8% to 25%
 - Greater than 25%
 - Prime Farmland
 - Farmland of Statewide Significance
 - Hydric Soils



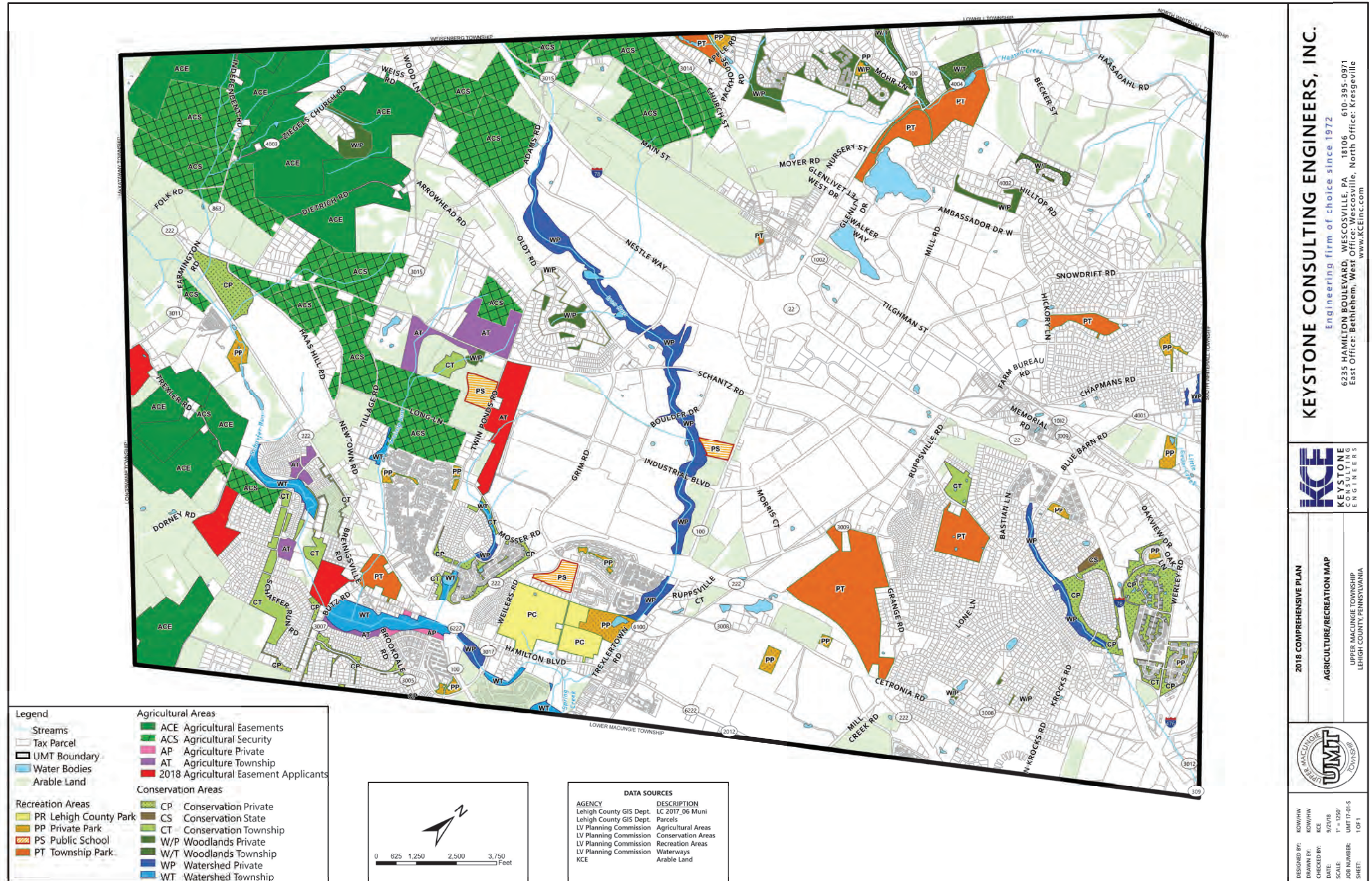
DATA SOURCES

AGENCY	DESCRIPTION
Lehigh County GIS Dept.	LC 2017_06 Muni
Lehigh County GIS Dept.	LC 2017_06 RdCline
Lehigh County GIS Dept.	LC 2004_01 landuse
Berks County GIS Dept.	March 2013 maxat
Berks County GIS Dept.	March 2013 longs
USGS	NHD FLOWLINE PA

Map 7: Wellhead Protection Areas and Carbonate Bedrock Areas



Map 8: Agricultural Lands and Preservation



KEYSTONE CONSULTING ENGINEERS, INC.
 Engineering firm of choice since 1972
 6235 HAMILTON BOULEVARD, WESCOVILLE, PA 18106 610-395-0571
 East Office: Bethlehem, West Office: Wescosville, North Office: Kresgeville
 www.KCEinc.com

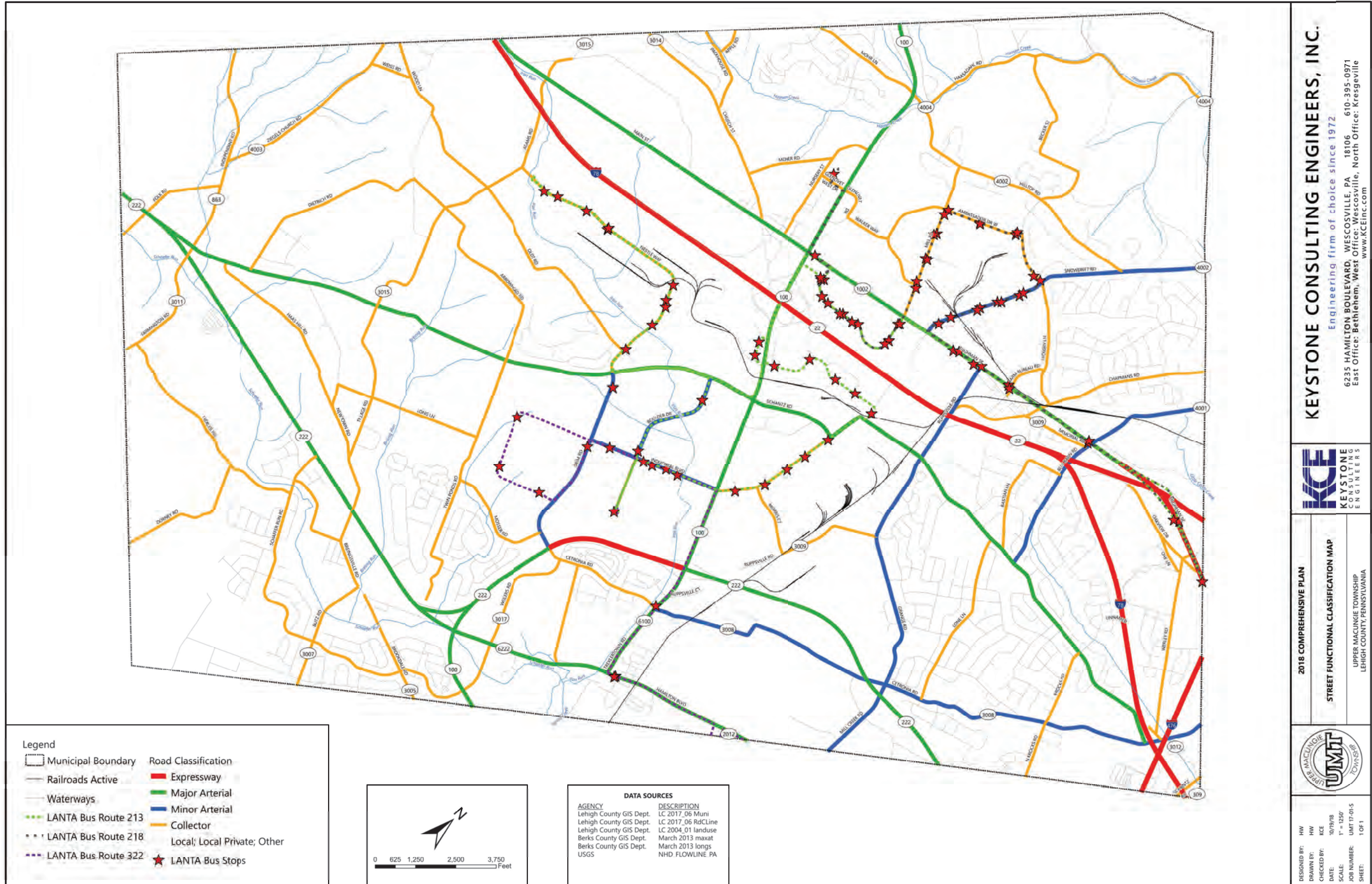


2018 COMPREHENSIVE PLAN
 AGRICULTURE/RECREATION MAP
 UPPER MACUNGIE TOWNSHIP
 LEHIGH COUNTY, PENNSYLVANIA

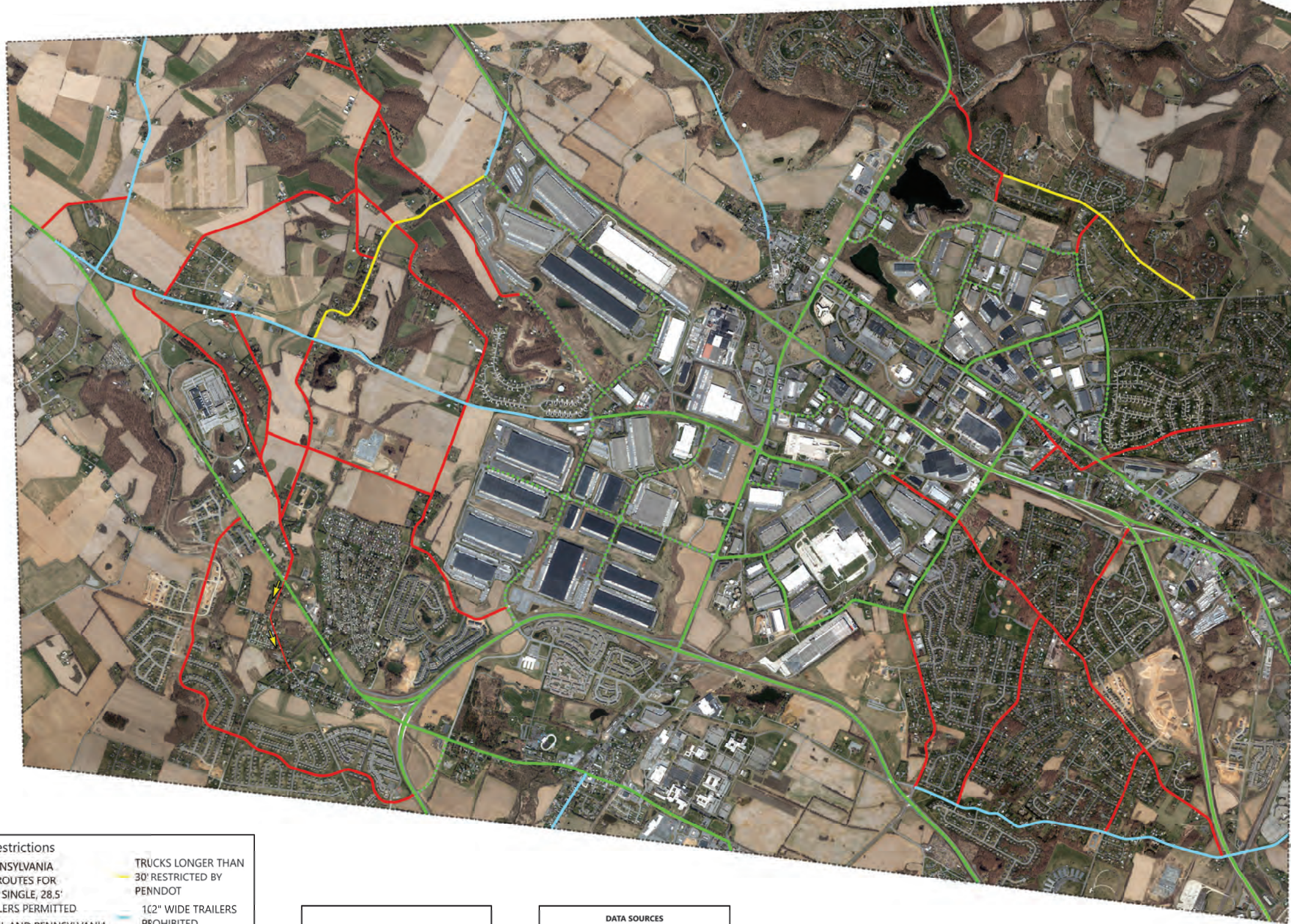


DESIGNED BY: KOW/HW
 DRAWN BY: KOW/HW
 CHECKED BY: KCE
 DATE: 9/27/18
 SCALE: 1" = 1250'
 JOB NUMBER: UMT 17-01-S
 SHEET: 1 OF 1

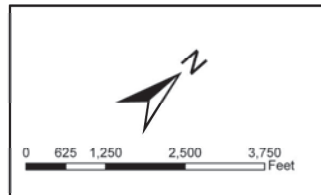
Map 9: Street Classification



Map 10: Truck Routes & Restrictions



- Truck Routes and Restrictions**
- NATIONAL AND PENNSYLVANIA APPROVED ACCESS ROUTES FOR 102" WIDE, 48' & 53' SINGLE, 28.5' COMBINATION TRAILERS PERMITTED
 - POTENTIAL NATIONAL AND PENNSYLVANIA ACCESS NETWORK ADDITIONS
 - TRUCKS LONGER THAN 30' RESTRICTED BY TOWNSHIP ORDINANCE (BOTH DIRECTIONS)
 - TRUCKS LONGER THAN 30' RESTRICTED BY TOWNSHIP ORDINANCE (ONE DIRECTION)
 - TRUCKS LONGER THAN 30' RESTRICTED BY PENNDOT
 - 102" WIDE TRAILERS PROHIBITED (SIGNAGE POSTED)
 - UMT Boundary



DATA SOURCES

AGENCY	DESCRIPTION
Lehigh County GIS Dept.	LC 2017_06 Muni
Lehigh County GIS Dept.	LC 2017_06 RdCLine
Lehigh County GIS Dept.	Parcel Lines
KCE	Truck Restrictions

KEYSTONE CONSULTING ENGINEERS, INC.
 Engineering firm of choice since 1972
 6235 HAMILTON BOULEVARD, WESCOVILLE, PA 18106 610-395-0571
 East Office: Bethlehem, West Office: Wescosville, North Office: Kresgeville
 www.KCEinc.com

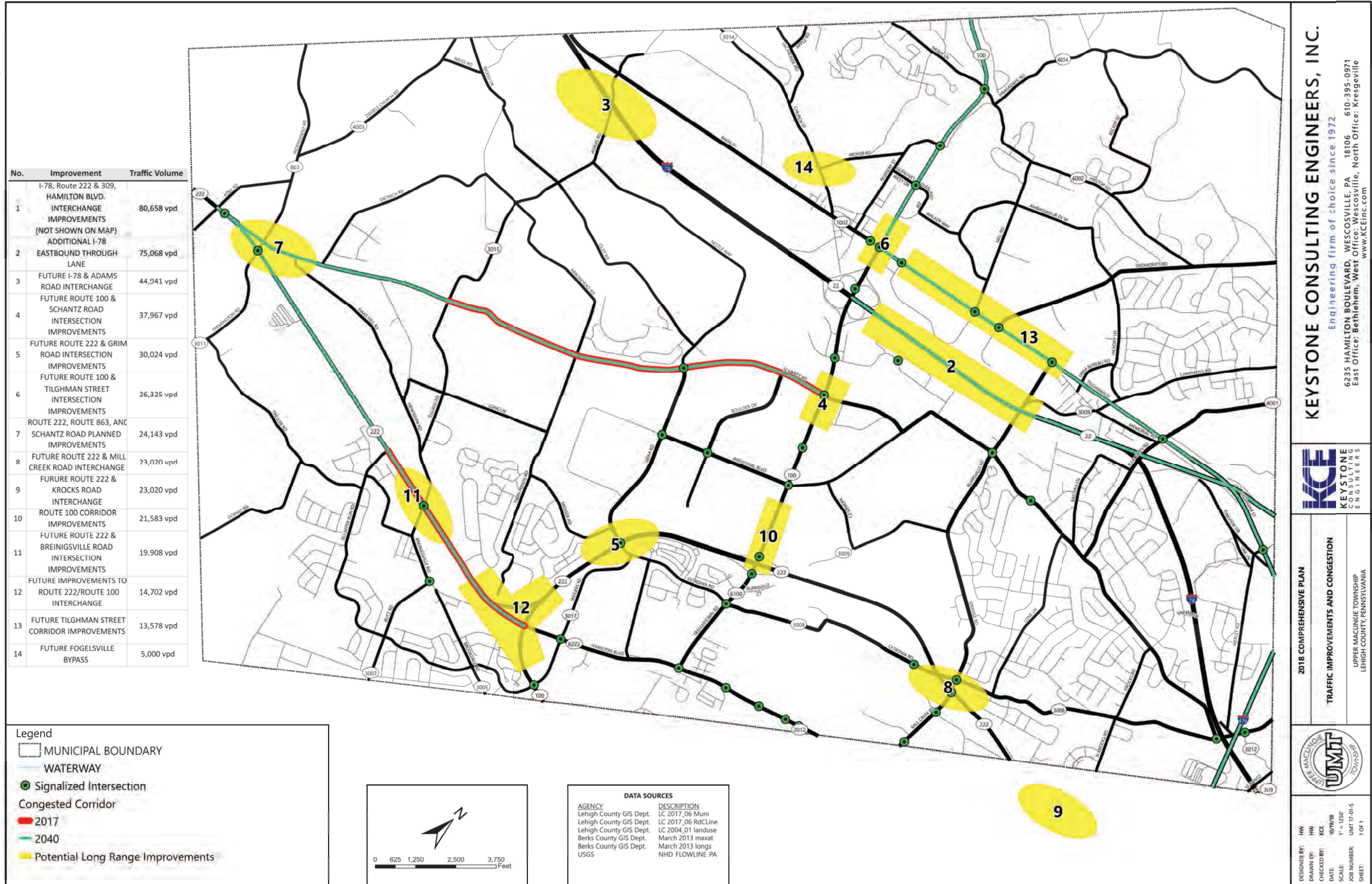


2018 COMPREHENSIVE PLAN
 TRUCK ROUTES AND RESTRICTIONS MAP
 UPPER MACUNGIE TOWNSHIP
 LEHIGH COUNTY, PENNSYLVANIA



DESIGNED BY: HW
 DRAWN BY: HW
 CHECKED BY: KCE
 DATE: 10/24/18
 SCALE: 1" = 1250'
 JOB NUMBER: UMT 17-01-S
 SHEET: 1 OF 1

Map 11: Traffic and Congestion Improvements





Johnson, Mirmiran & Thompson (JMT)
 Corporate Headquarters: 40 Wight Avenue, Hunt Valley, MD 21030, USA
 (410) 329-3100
 www.jmt.com

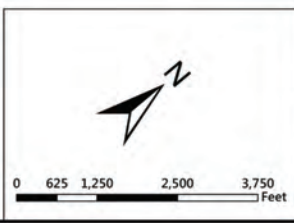


DRAFT 2018 COMPREHENSIVE PLAN
BICYCLE AND PEDESTRIAN CONNECTIONS
 UPPER MACUNGIE TOWNSHIP
 LEHIGH COUNTY, PENNSYLVANIA

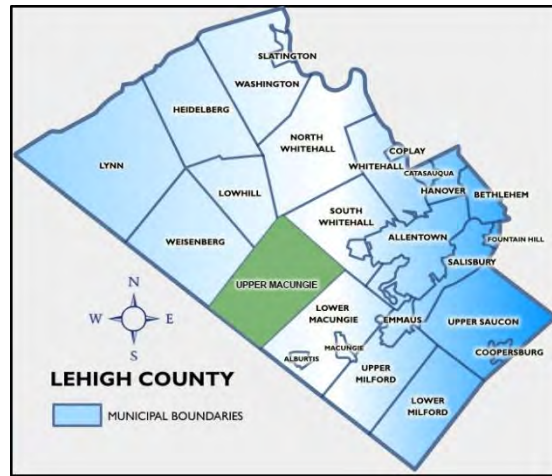


DESIGNED BY: JMT
 DRAWN BY: JMT
 CHECKED BY: JMT
 DATE: 7/9/2019
 SCALE: SCALE BAR
 JOB NUMBER: JMT17-01-S
 SHEET: 1 OF 1

Legend	
	MUNICIPAL BOUNDARY
	EXISTING PEDESTRIAN PATH
	EXISTING BIKE PATH
	EXISTING LOCAL BIKE ROUTE
	PA BICYCLE ROUTE L
	PROPOSED CONNECTIONS (PUBLIC INPUT)
	POTENTIAL STREAM CORRIDOR CONNECTION
	POTENTIAL CONNECTIONS
	POTENTIAL RAILROAD CORRIDOR CONNECTION
	TOWNSHIP PARKS AND OPEN SPACE
	PUBLIC COMMENTS
	PUBLIC COMMENTS REGARDING SAFETY CONCERNS



DATA SOURCES	
AGENCY	DESCRIPTION
Lehigh County GIS Dept.	Municipal Boundary
PASDA	Existing Pedestrian Path, Existing Bike Path
PASDA	Existing Local Bike Route
PASDA	PA Bicycle Route L
Upper Macungie Township	Proposed Connections (Public Input)
Upper Macungie Township	Potential Stream Corridor Connection
Upper Macungie Township	Potential Connections
Upper Macungie Township	Potential Railroad Corridor Connection
Keystone Engineering	Township Parks and Open Space
Johnson, Mirmiran & Thompson	Public Comments
Lehigh Valley Planning Commission	Public Comments Regarding Safety Concerns
	Aerial Imagery



Source: <http://www.aapublicadjusters.com/public-adjuster-lehigh-county/>

Upper Macungie Township

The pace of development since the 2007 Comprehensive Plan, Upper Macungie Township is ranked as one of the fastest growing communities in both Lehigh County and Pennsylvania based upon strategic location, great schools, exciting recreational locations and parks, low taxes, and other amenities. While agriculture remains strong to this day, the influx of manufacturers created new employment opportunities and heightened demand for new housing developments, retail services and infrastructure improvements. The Township is committed to preserving a significant proportion of our community as open space preserving its rural heritage which ensures a cleaner, greener environment for future generations of Upper Macungie residents. The series of maps in this book play an important role in documenting unique features of the Township as well as depicting development and preservation patterns to support planning for the future of our community.

Source: UMT website





7248 Tilghman Street, Suite 100
Allentown, PA 18106

