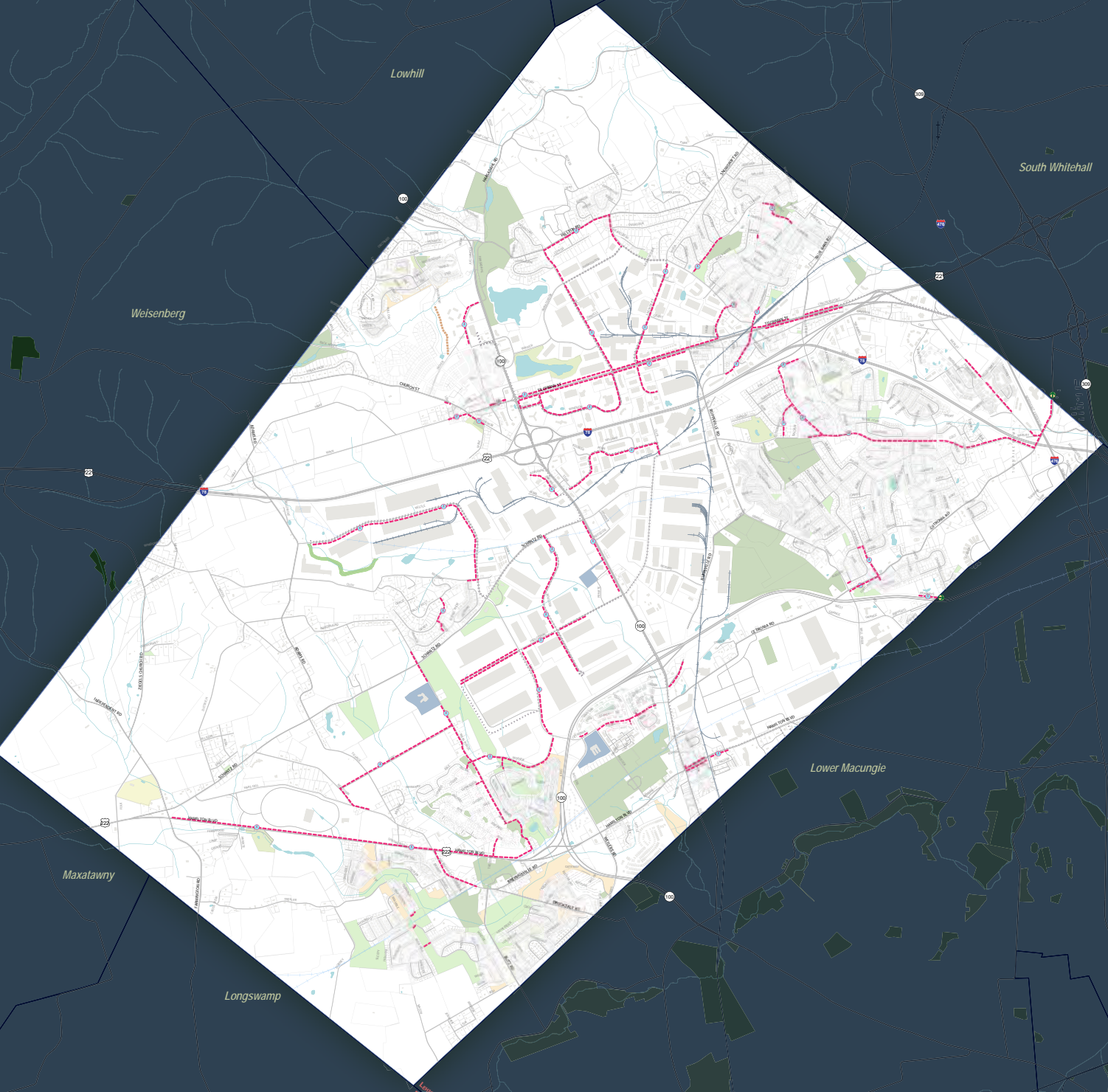


## Sidewalk

Sidewalks accomplish pedestrian connectivity in the most basic form, allowing users to traverse their community on a designated concrete path between 4'-6' in width. They enhance connectivity, promote walking, and reduce the chance of pedestrian-involved incidents by creating a safe place for pedestrians to walk without being near vehicular traffic.



# Toolbox: Sidewalks

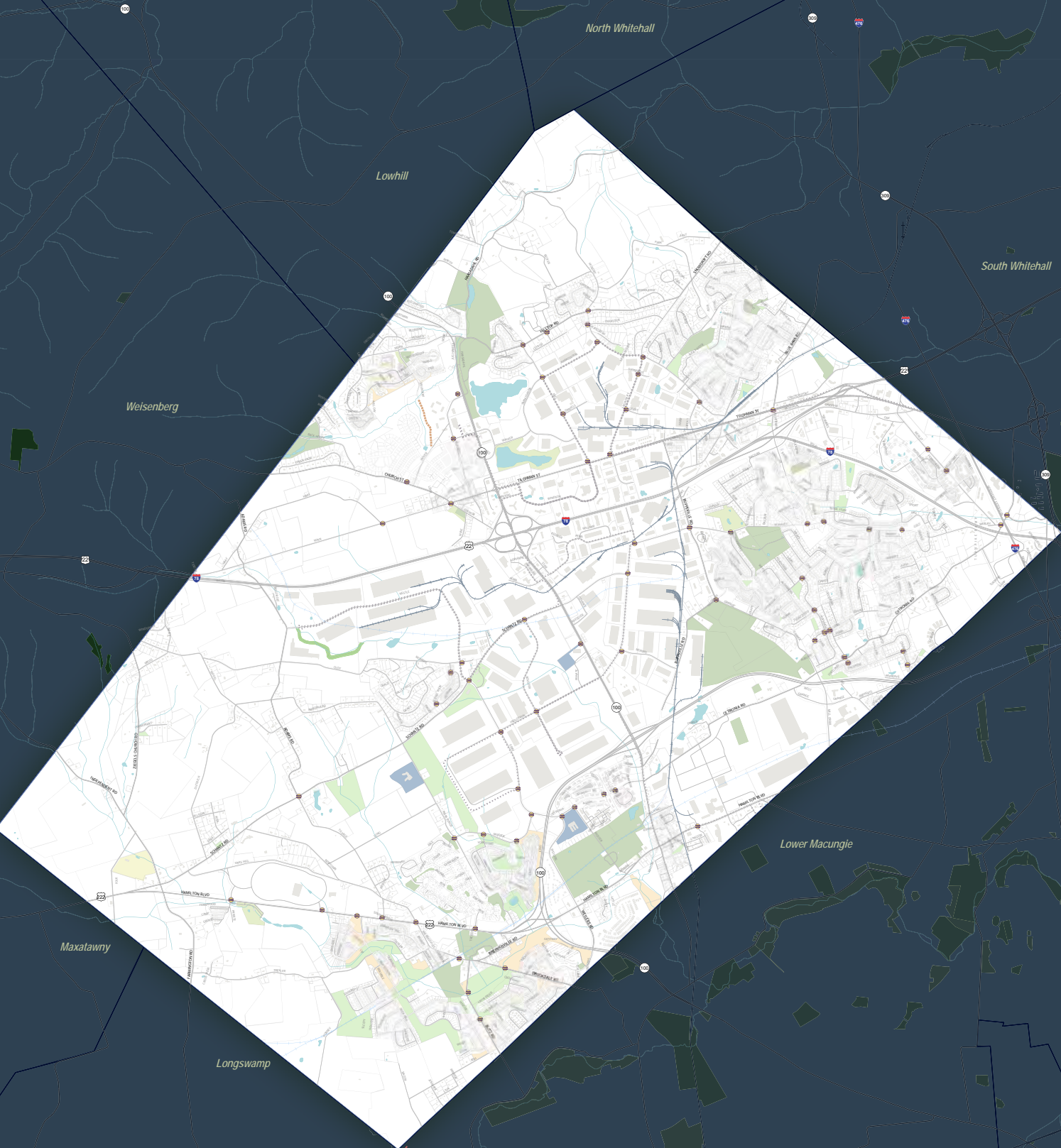


## Crosswalk

All signalized intersections must have marked crosswalks at all legs unless pedestrians are prohibited from the roadway or section thereof, or if there is physically no pedestrian access on either corner or no likelihood that access can be provided. All crosswalks are required to have ADA curb ramps.



# Toolbox: Crosswalks

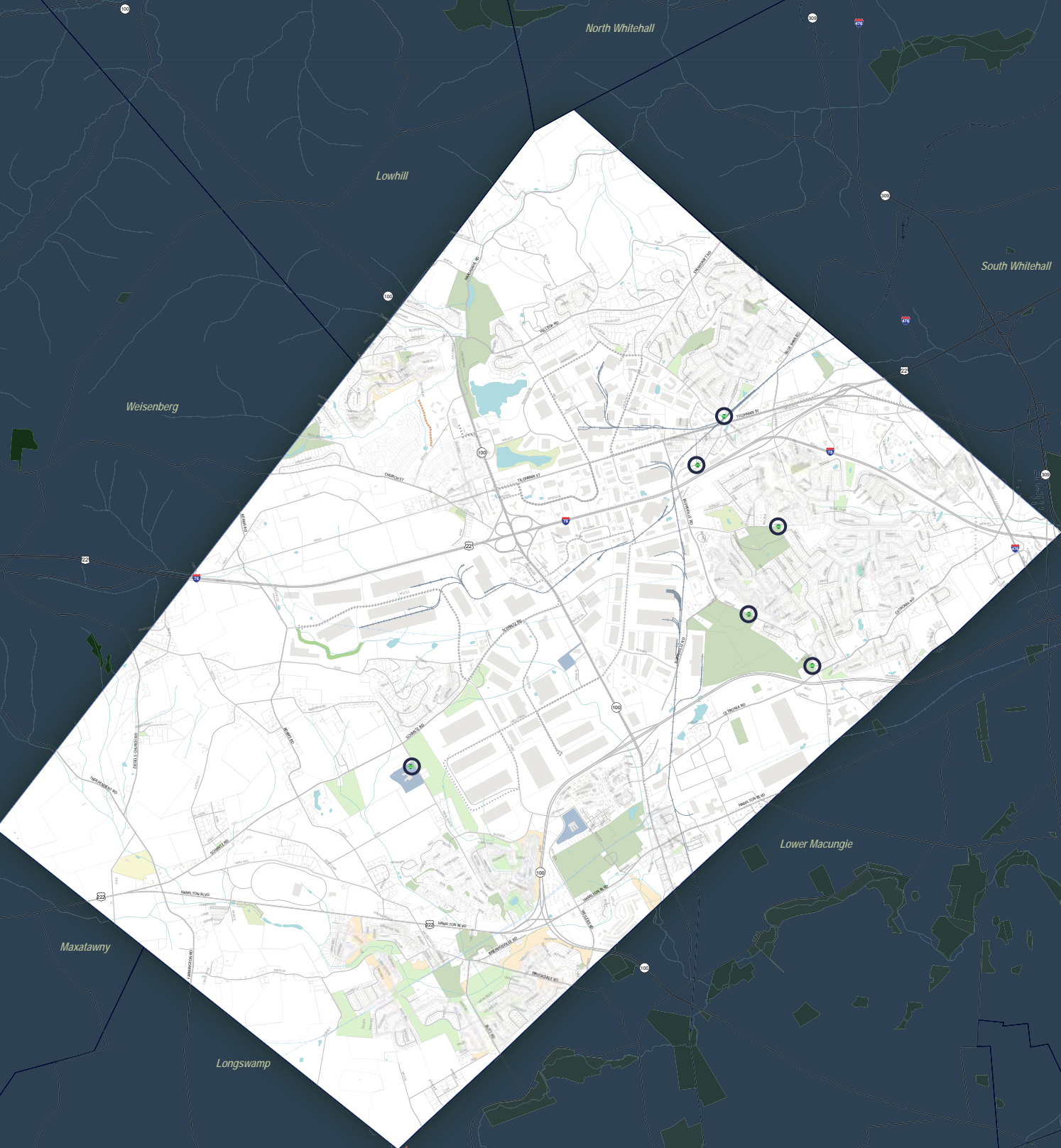


## Decorative Crosswalk

A decorative crosswalk adds additional safety to an intersection by drawing a vehicle operators' eyes to the safety improvement itself, thus slowing down vehicular traffic. Decorative crosswalks are often paired with other improvements such as rapid flashing beacons (pg 118) or speed tables (pg146)

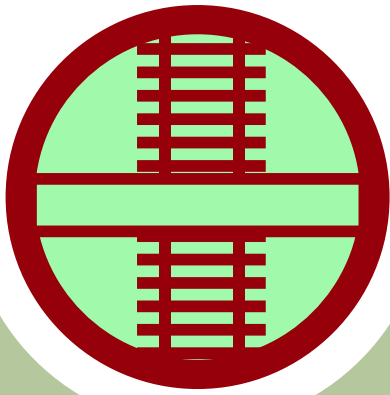


# Toolbox: Decorative Crosswalks

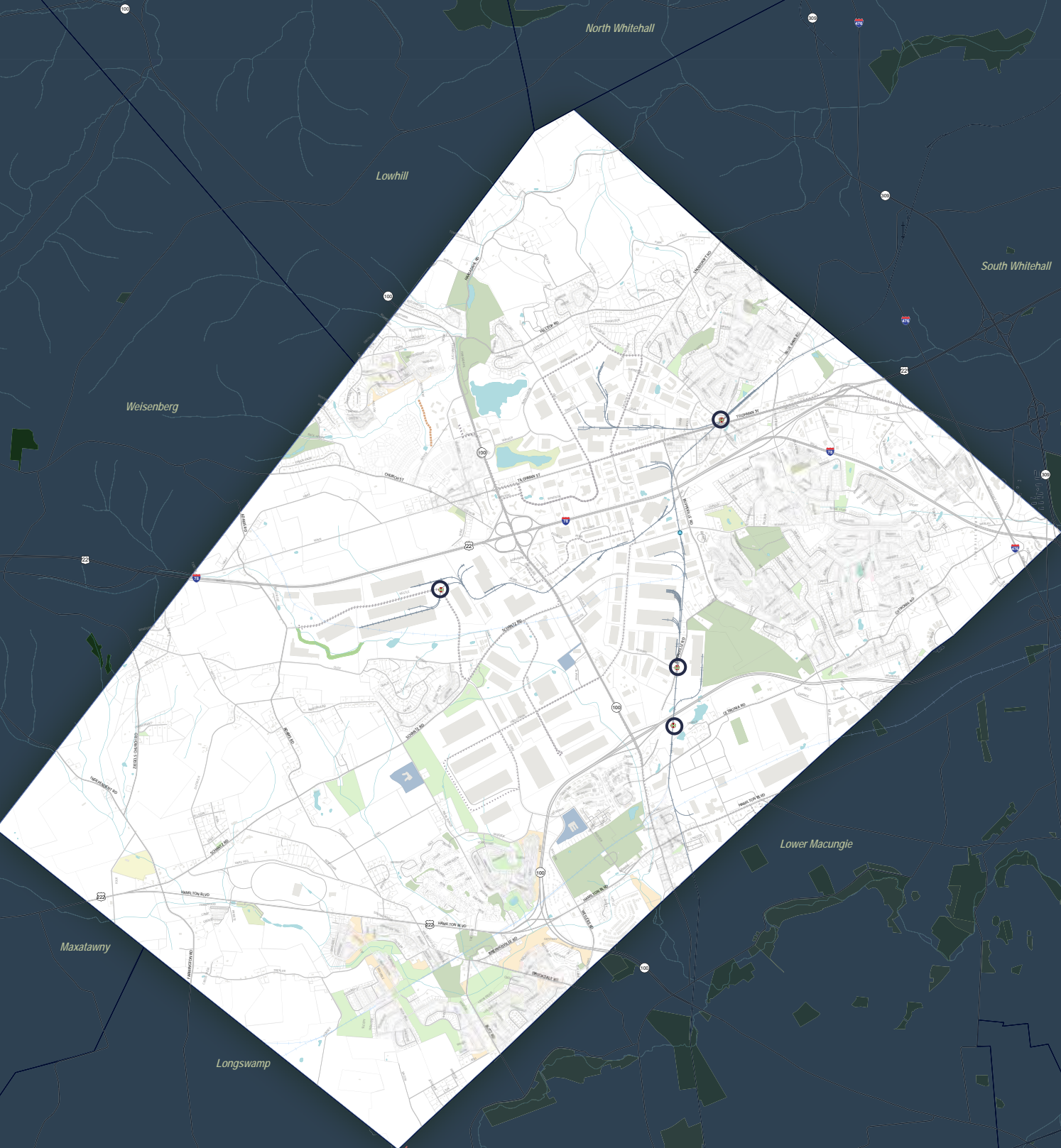


## Special Crossing

A special crossing requires the crossing of other elements than roads. In the case of Upper Macungie Township, special crossings interact with railroad tracks and junctions. At railroads, bike paths must cross at a ninety-degree angle to avoid accidents caused by tires slipping or sticking in the grooves.



# Toolbox: Special Crossings



## Rapid Flashing Beacon

Rapid flashing beacons make motorists aware of a pedestrian or bicycle crossing. Beacons can be constant, or user operated.



# Toolbox: Rapid Flashing Beacon

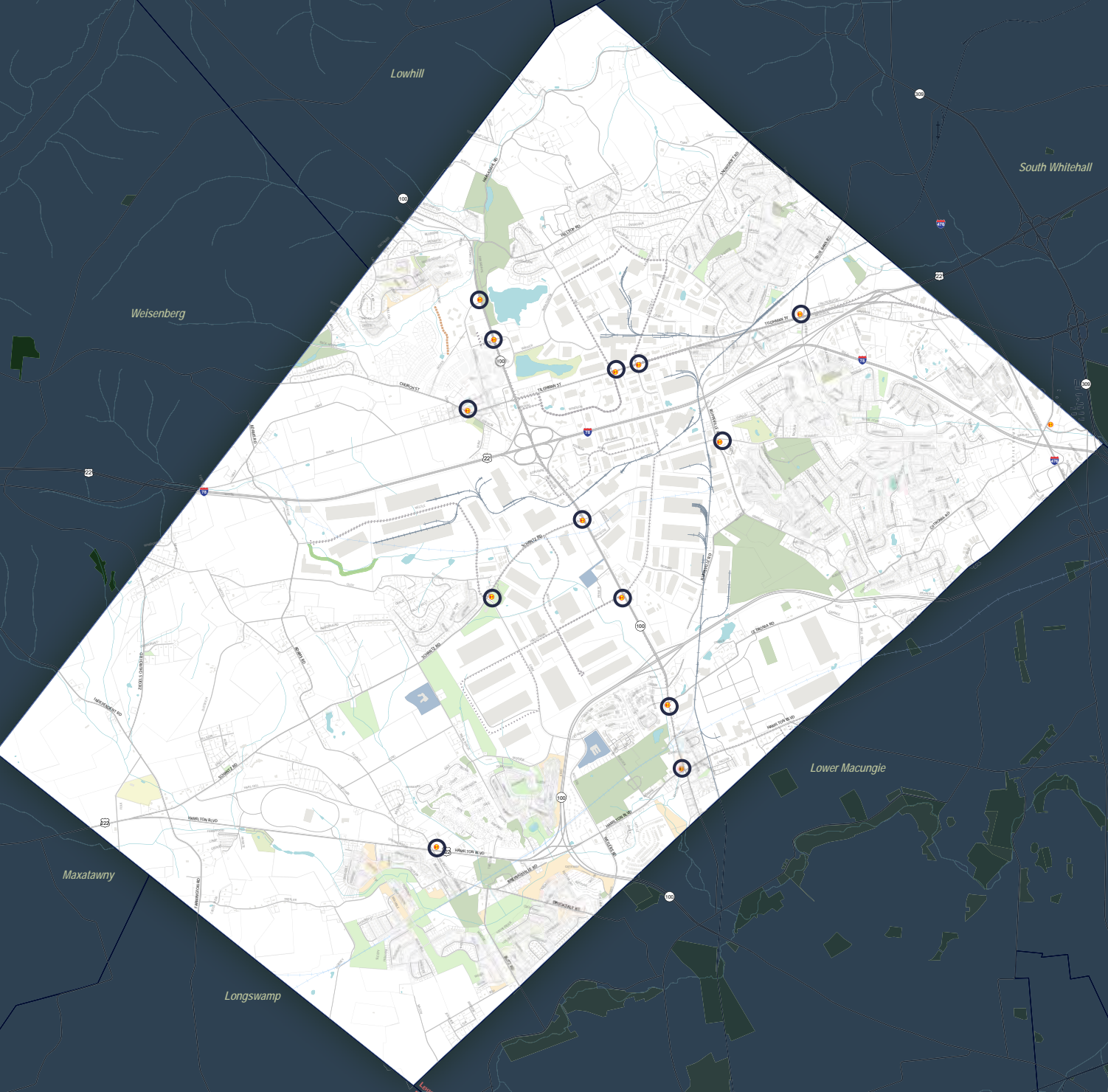


## Hand Man

Hand Man, or count down signal, is the terminology used by PennDOT to describe the signals placed at intersections which notify pedestrians are safe to cross the street.



# Toolbox: Hand Man



## Pedestrian Refuge Island

Pedestrian Refuge Islands are protected spaces placed in the center of the street to facilitate bicycle and pedestrian crossings. Crossings of two-way streets are facilitated by allowing bicyclists and pedestrians to navigate only one direction of traffic at a time. They should be used in circumstances where pedestrians need to cross large, multi-lane highways.



# Toolbox: Pedestrian Refuge Island

