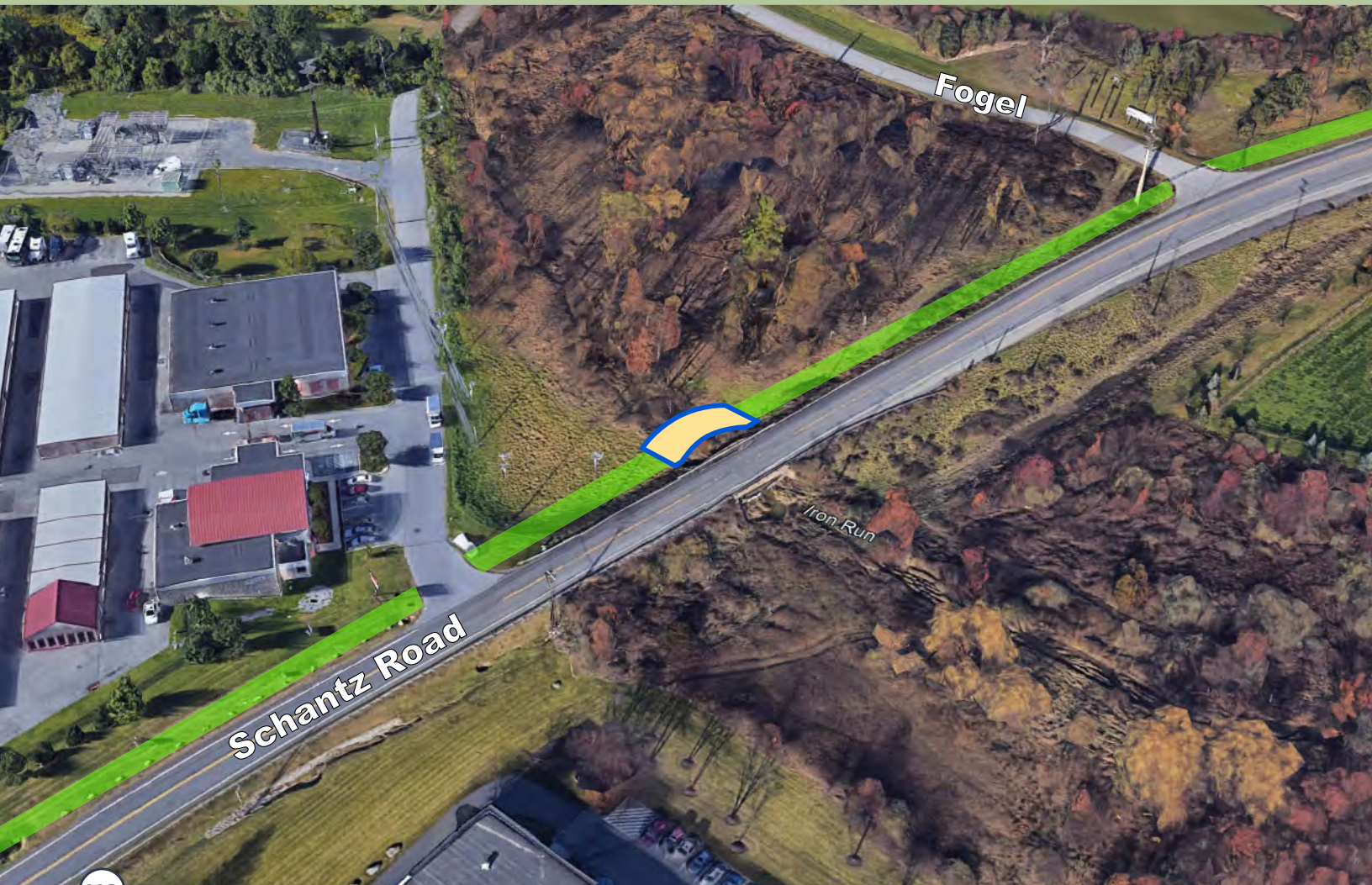


Small Bridge

Small bridges provide a method of traversing steep grades or water features. These bridges are prefabricated and provide a simple and effective solution to connectivity challenges.





Large Bridge

Large bridges provide a solution to large scale connectivity issues. These bridges require in-depth, site-specific engineering due to their length and vertical clearance needs.





North Whitehall

Lowhill

South Whitehall

Weisenberg

Lower Macungie

Maxatawny

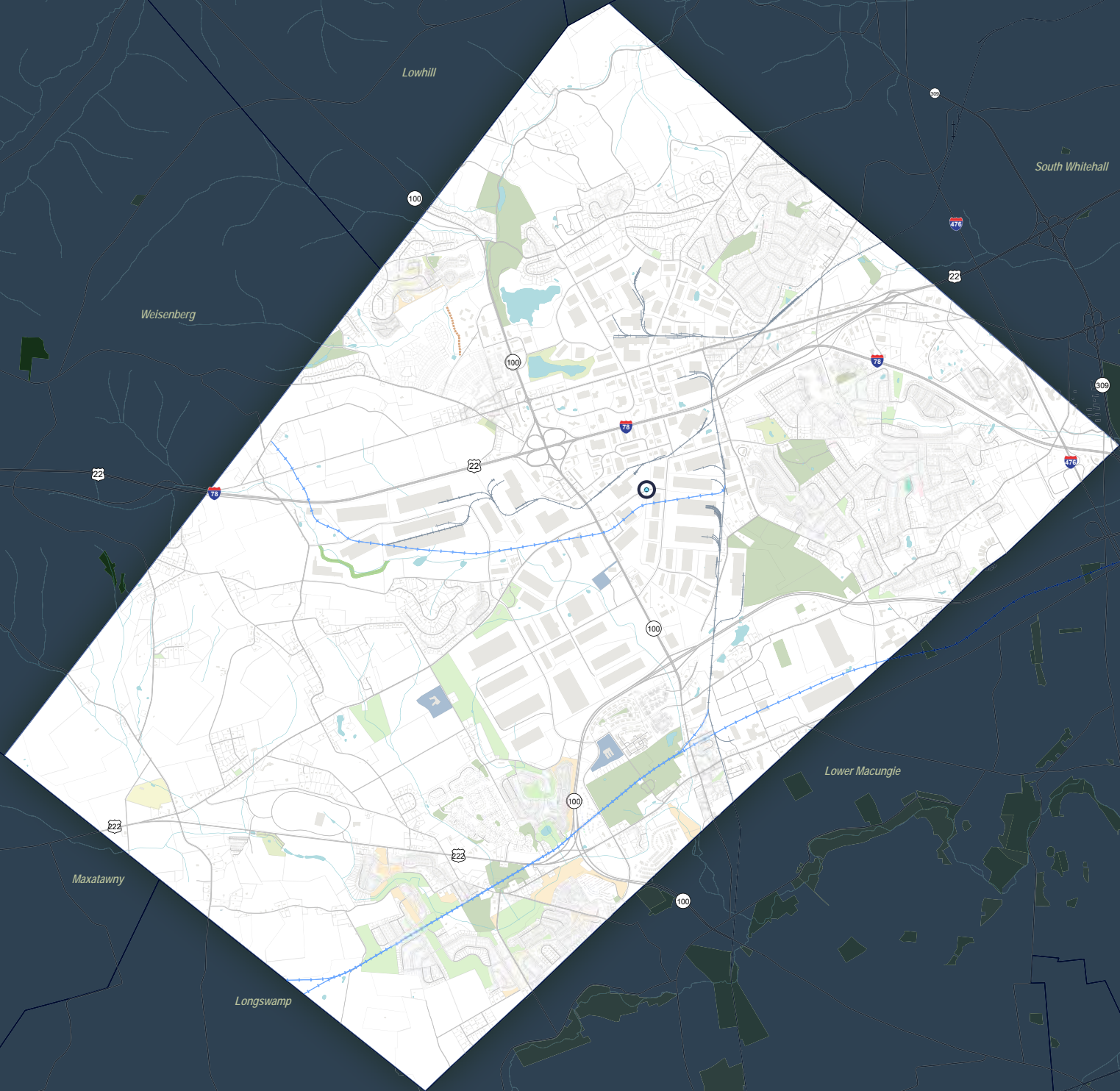
Longswamp

Tunnel

A tunnel is proposed at the Schantz Rd. underpass near Ruppssville Rd. A pedestrian tunnel will allow this overpass to remain a traffic calming device for Schantz Rd, while providing space for pedestrians to safely pass the connectivity barrier.



Toolbox: Tunnel



Stone Dust Hiking Trail

A stone dust hiking trail provides a formalized route for hikers and/or cyclists. These trails are compact, yet more permeable than a paved, multi-use trail. Stone dust trails create a safe route for trail users to navigate natural areas.



Toolbox: Stone Dust Hiking Trail



Speed Table

A speed table is a traffic calming device where the cartway is raised 3-3.5 inches and is roughly 22 feet long. A speed table forces drivers to slow down, lowering the chance of altercations with pedestrians. Speed tables can be proposed on streets with operating speeds between 25-45 mph, depending on spacing. Signage notifying vehicles must be displayed at all speed tables.



Toolbox: Speed Table



Speed Cushions

Speed cushions, like speed tables, reduce vehicular speeds and require signage for drivers. Speed cushions have wheel cutouts that allow emergency vehicles and bicyclists to pass through them.



Toolbox: Speed Cushions



